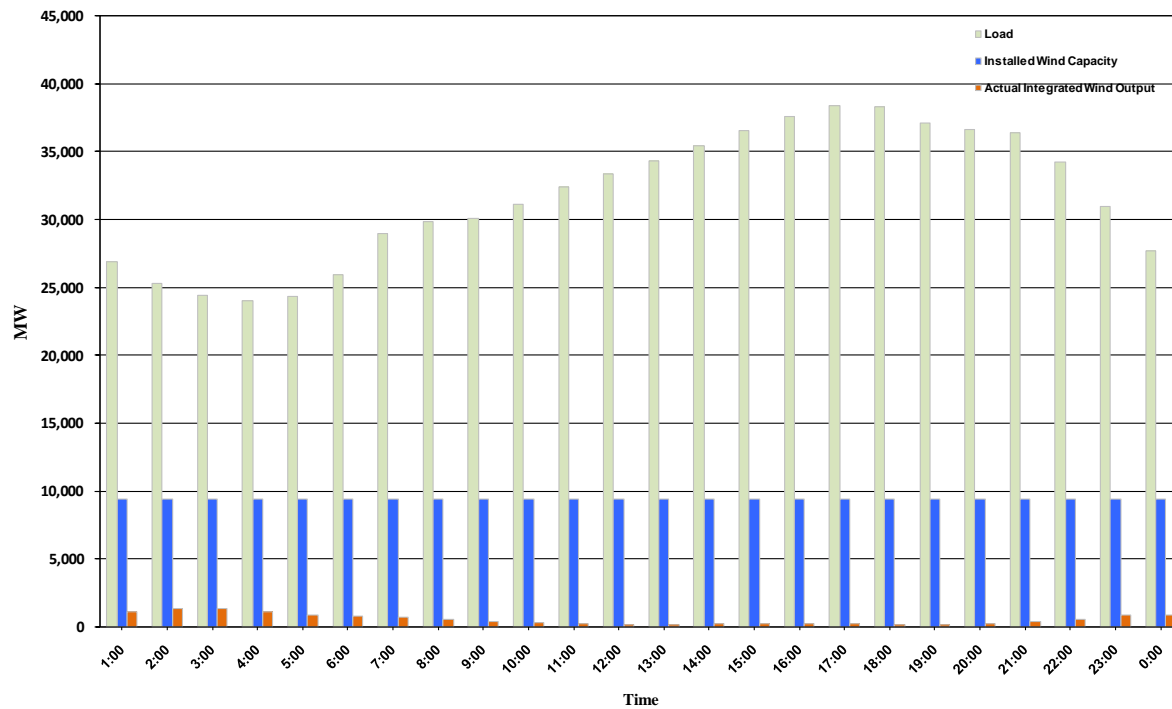




ERCOT Grid Operations Wind Penetration Report: 09/27/10

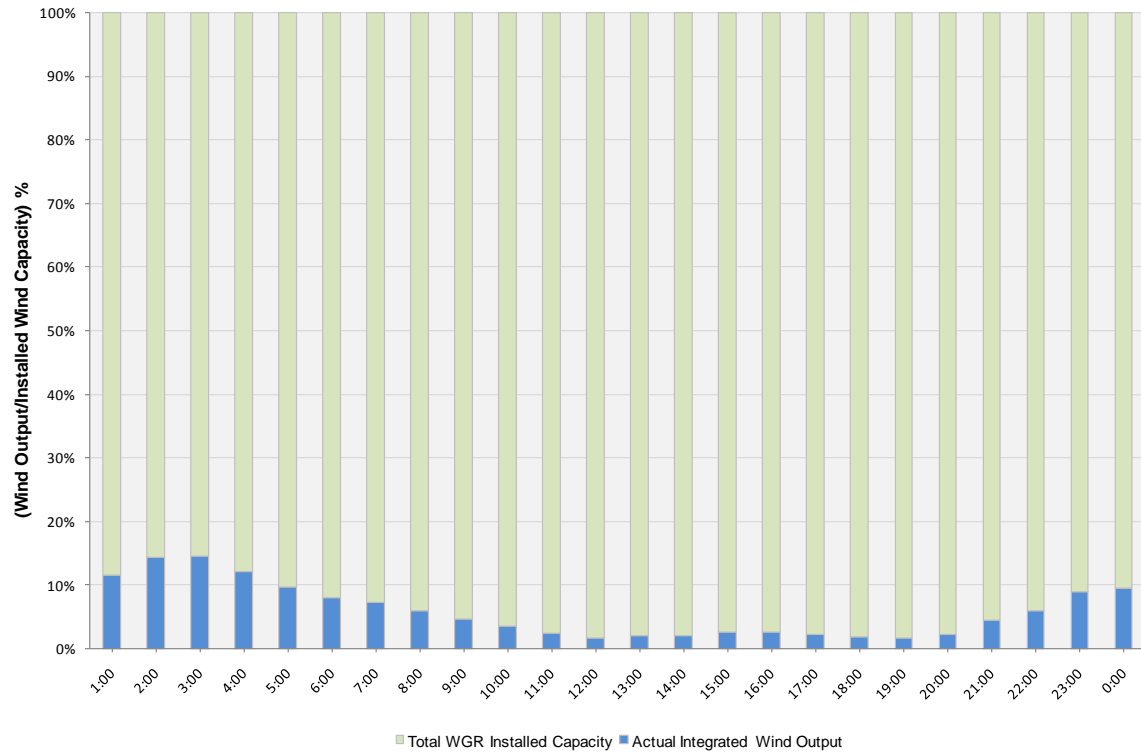
Peak Load	38,382 MW
Load Peak Hour	17
Wind Record 06/12/10	7016 MW
Max Wind value	1506 MW
Wind Peak Hour	01:58:32
Wind Penetration %	6.06

Hourly Average Actual Load vs. Actual Wind Output
09-27-2010

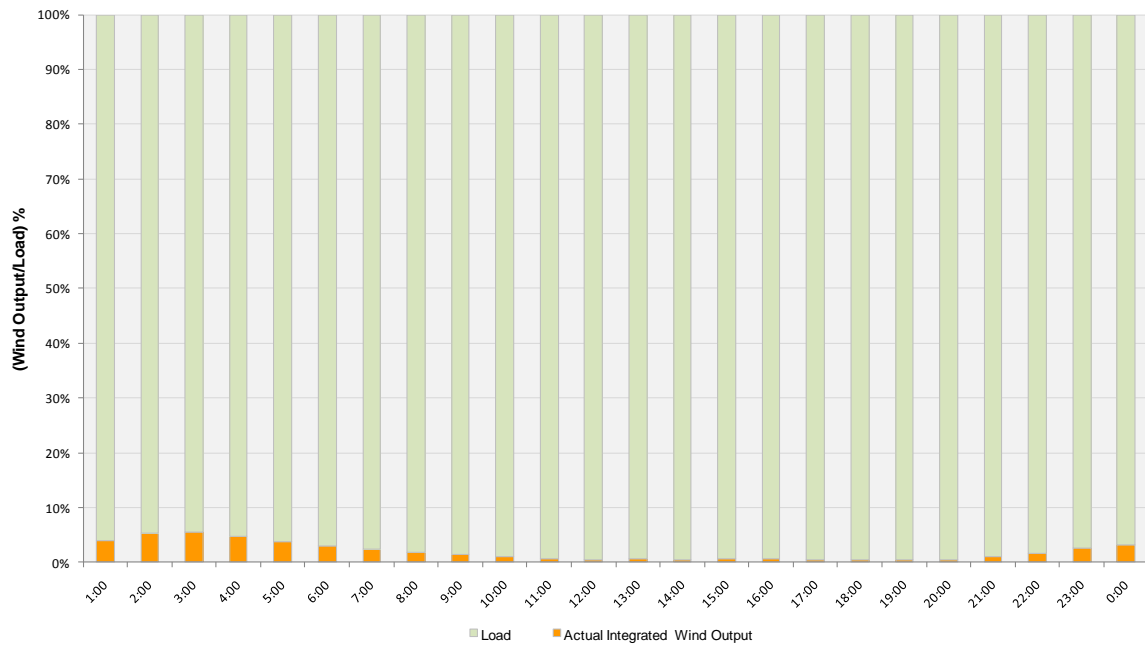




Actual Wind Output as a Percentage of the Total Installed Wind Capacity
09-27-2010



Actual Wind Output as a Percentage of the ERCOT Load
09-27-2010





ERCOT Load vs. Actual Wind Output 09/20/10 - 09/27/10

